

ПРИЛОЖЕНИЕ №1

RU ИНСТРУКЦИЯ ПО МОНТАЖУ И ЭКСПЛУАТАЦИИ

EN INSTALLATION AND OPERATION MANUAL

KZ МОНТАЖ А ЖА НЕ ЭКСПЛУАТАЦИЯ БОЙҒЫНЫҢ А НУСҚАҒА ЛЫҚ

AZ QURASDIRMA VƏ İSTİSMAR TƏŞMATI

UZ ЙИГИШ ВА ФЙДАЛАНИШ БУЙИЧА ЙУРИҚНОМА

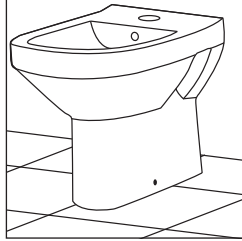
GE მონტაჟის და ექსპლუატაციის ინსტრუქცია

AM ՄՈՆՏԱՅԻ և ԵՃՆԱԿՈՂՄԱՆ ՀԳՎԱԼՈՎ

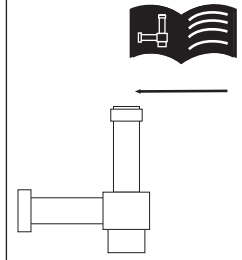
TJ ДАСТУРАМАЛ ОИДИ НАСБКУНИ ВА ИСТИФОДАБАРИ

KG МОНТАЖДОО ЖАНА ЭКСПЛУАТАЦИЯЛОО БОЙНЧА НУСКАМА

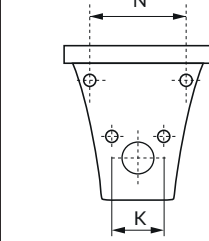
1 A B



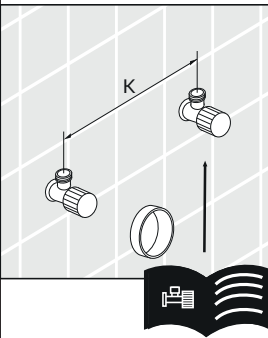
2 A B



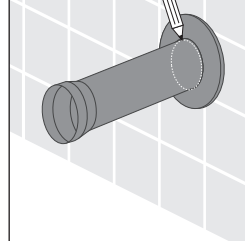
3 A B



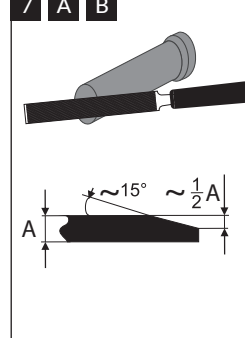
4 A B



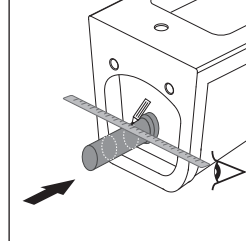
5 A B



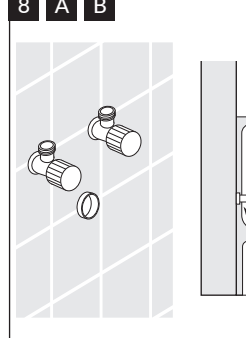
6 A B



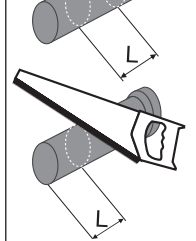
7 A B



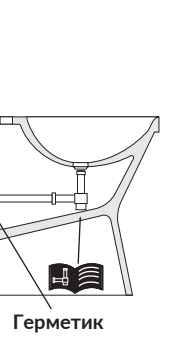
8 A B



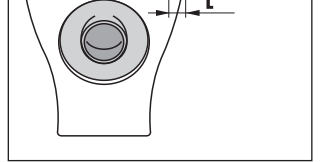
9 A



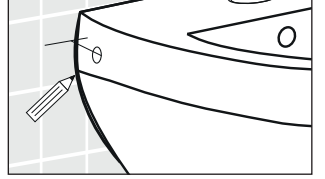
10 A



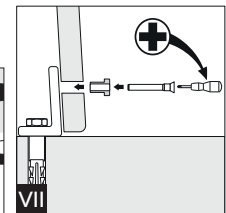
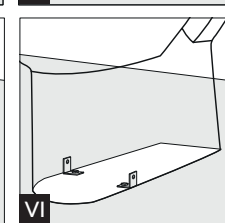
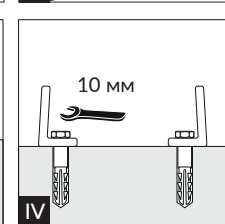
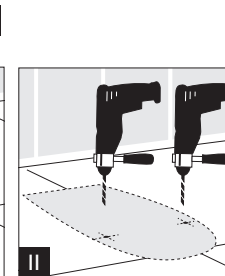
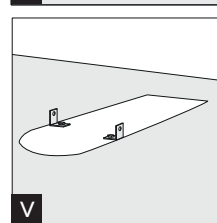
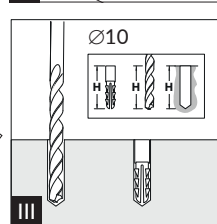
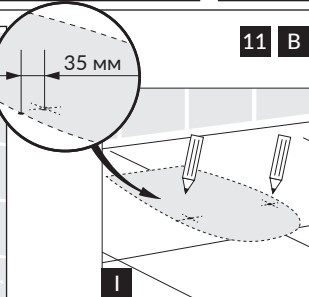
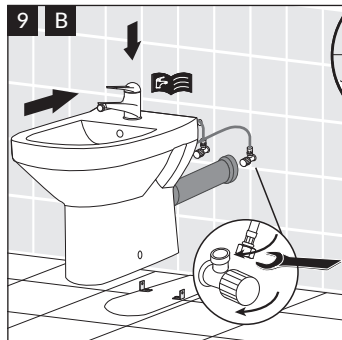
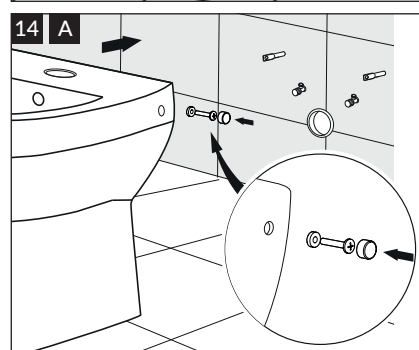
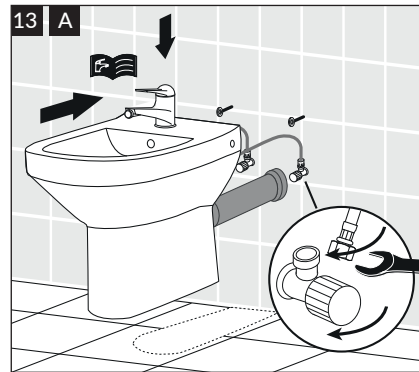
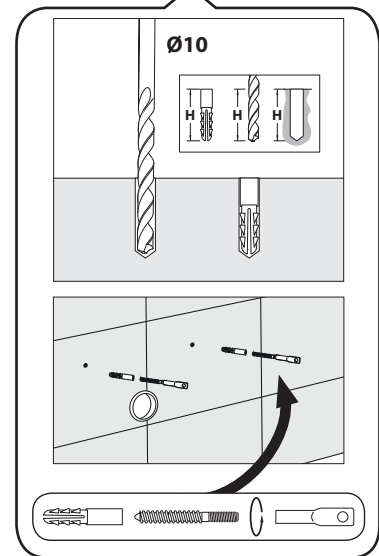
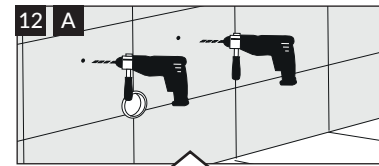
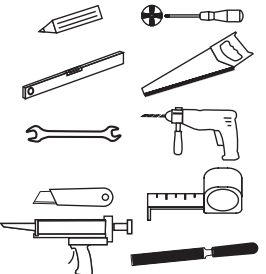
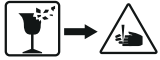
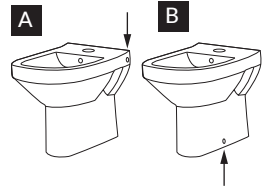
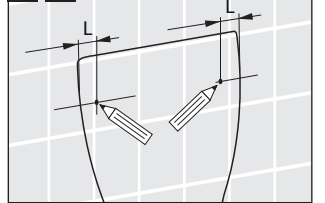
9 A



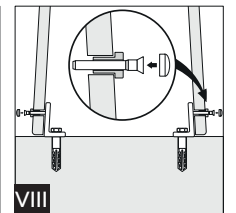
10 A



11 A



15 A
12 B



Герметик

Герметик